

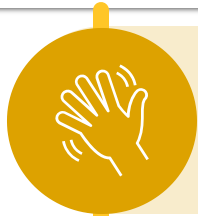




# Early College Data Collection from Private Institutions

October 14, 2022



MASSACHUSETTS  
Department of  
Higher Education

# Today's Agenda

-  Introductions
-  How and why will these data be used?
-  Review of Data Dictionary & Requested Data Elements
-  Overview of Submission Process
-  Questions and Next Steps

# Today's Goals

- Review how, why we are asking to collect these data from our private IHE partners.
- Illustrate how these data will be used in partnership with DESE data.
- Review data elements to be reported and associated file submissions.
- Briefly describe submission process to come

**Our discussion today will inform the setup of this data collection system, so your input is incredibly valuable!**

# Introductions

**How and why these data will be used**

# Why are we collecting these data?



## **EQUITABLE ACCESS**

Do programs effectively target, engage students from groups traditionally underrepresented in higher ed?



## **SIZE, SCOPE, SCALE**

Are programs scaling appropriately?  
Do programs have appropriate size and scope to see the desired impact?



## **INSTITUTIONAL SUPPORT**

Are funds accurate and paid to designated partners in a regular, timely manner?



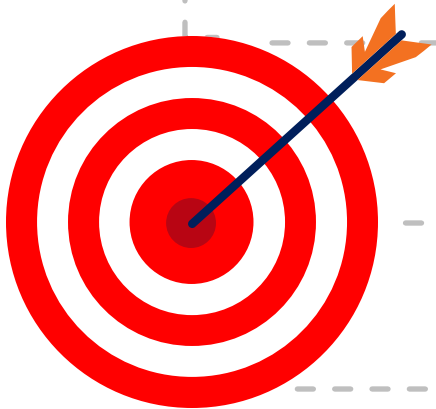
## **STUDENT SUCCESS**

Are institutions supporting student success?  
Are students completing 12+ credits?



## **LONG-TERM OUTCOMES**

Are students matriculating to college?  
Are students completing a degree at higher rates, in less time, for less money?



# Why are we collecting these data?

**But, with our current systems, we cannot do this for our private institutions of higher education**



## EQUITABLE ACCESS

Do programs effectively target, engage students from groups traditionally underrepresented in higher ed?



## SIZE, SCOPE, SCALE

Are programs scaling appropriately?  
Do programs have appropriate size and scope to see the desired impact?



## STUDENT SUCCESS

Are funds accurate and paid to program partners in a timely manner?  
Are institutions supporting student success?  
Are students completing 12+ credits?



## LONG-TERM OUTCOMES

Are students matriculating to college?  
Are students completing a degree at higher rates, in less time, for less money?

# Current State Data Collections

## K-12 DATA

- **Student Information Management System (SIMS):** formal DESE collection on student information that meets state, federal reporting requirements and includes student demographic and location data. **SIMS is the formal way that DESE identifies EC students.**
- **Student Course Schedule (SCS):** formal DESE collection on student course information. SCS helps to identify the courses that EC students are taking for postsecondary credit.

## HIGHER EDUCATION DATA

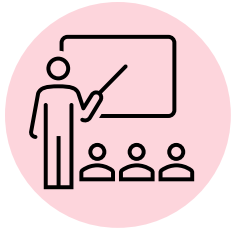
- **Higher Education Information Resource System (HEIRS):** Formal DHE collection that includes information on student demographics, enrollment, programs/majors, course records, degree completion, and financial aid. **HEIRS is the formal way that DESE/DHE will identify the number of credits in which EC students are enrolled for public IHEs.**
- **NEW Private IHE Submission:** Abbreviated HEIRS-like submission to be completed by private IHE partners in designated Early College partnerships. **This will be the formal way that DESE/DHE will identify the number of credits in which EC students are enrolled.**



# **Review of Data Dictionary & Requested Data Elements**

# Requested Files

Submitted Together



## Course File

In what courses are students enrolled this term?



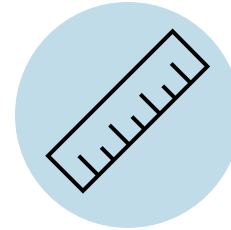
## Student File

Who are the students enrolled this term?



## Enrollment File

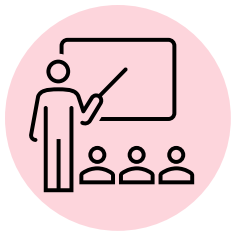
Which students are enrolled in which courses this term?



## Post-Term File

How did students do in each of their courses this term?

# Course File: Data Elements



## Course File

In what courses are students enrolled this term?

Data Element Name	Data Element Description
College ID	An institutional identification code, as assigned by the DHE
Year (Calendar Year)	The calendar year in which the course is offered
Term	The academic term in which the course is offered
Course Number	The identification number assigned to the credit course by the institution
Course Section Number	The alphanumeric identification code assigned to a specific section of a course
Course Title	Title assigned to the course by the institution
Credit Hours Assigned to the Course	The number of credit hours the student will receive upon successful completion of the course
Remedial Course Indicator	Distinguishing between reading, writing, and math remedial courses
Course Academic Discipline	The academic discipline with which the course is most frequently associated

**REMINDER: Only for courses in which Designated Early College students are enrolled**

# Review of HEIRS: Modeling our Private IHE Collection



## Student File

Who are the students enrolled this term?

Data Element Name	Data Element Description
College ID	An institutional identification code assigned by the DHE
Year (Calendar)	The calendar year for which information is being reported
Term	The academic term for which information is being reported
Student ID	Identification code assigned to the student by the institution
SASID	State Assigned Student Identifiers (SASID)
Birth Date	The student's date of birth
CEEB High School Code	The student's six-digit CEEB high school code

**REMINDER: Only for Designated Early College students enrolled in postsecondary coursework**

# Review of HEIRS: Modeling our Private IHE Collection



## Enrollment File

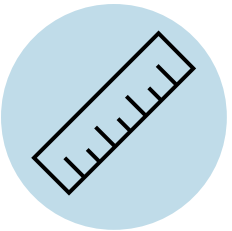
Which students are enrolled in which courses this term?

Data Element Name	Data Element Description
College ID	An institutional identification code, as assigned by the DHE
Year	The academic year for which the information is being reported
Term	The term for which information is being reported
Student ID Number	An identification code assigned to the student by the institution
Course Number	The identification number assigned to the course by the institution
Course Section Number	The identification number assigned to a specific section of the course
Course Section Credit Hours	The number of course section credit hours for which the student is registered

**REMINDER: Only for Designated Early College students enrolled in postsecondary coursework**

# Review of HEIRS: Modeling our Private IHE Collection

Data Element Name	Data Element Description
College ID	An institutional identification code, as assigned by the DHE
Year (Calendar)	The calendar year for which the information is being reported
Term	The term for which information is being reported
Student ID Number	An identification code assigned to the student by the institution
Course Number	The identification number assigned to the course by the institution
Course Section Number	The identification number assigned to a specific section of the course
End of Term Enrollment Outcome Status	Whether a student completed, audited, withdrew, failed, or did not complete the course in which they were enrolled
Grade Received	The numeric grade received in the course
Credits Earned	The number of credits the student earned for the course
Pass/Fail Grade Received	The grade received in a Pass/Fail course



**Post-Term File**

How did students do in each of their courses this term?

**REMINDER: Only for Designated Early College students reported in Student, Enrollment Files**

# Overview of Submission Process

# Collecting & Submitting Early College Data

- **Data Dictionary** includes data elements, format for submission
- Access for submission through **EOE Security Portal**
  - *If you do not currently have access, we will work with EOE IT to ensure that you have access for submission*
- **Upload** individual files
  - Course, Student, Enrollment Files
  - Post-Term files
- **Error-checking** and interdependencies



# Submitting Early College Data

- **Institutional electronic sign-off**
- **Additional support** will be available through the submission process from Amanda & Renee
  - Renee Poisson, *Early College Program Specialist*: [renee.poisson@mass.gov](mailto:renee.poisson@mass.gov)
  - Amanda Colligan, *Research Analyst*: [acolligan@dhe.mass.edu](mailto:acolligan@dhe.mass.edu)
- **Additional documentation** on submission process to come

# Submitting Early College Data

- Goal for submission of initial Fall files (*Course, Student, Enrollment files*) in **December 2022**.
- Typical calendar of reporting will generally follow HEIRS timelines:
  - **Fall 2022** Term-Specific Files:
    - Course, Student, Enrollment Files: *December 16, 2022*
    - Post-Term File: *January 30, 2023*
  - **Spring 2023** Term-Specific Files:
    - Course, Student, Enrollment Files: *April 14, 2023*
    - Post-Term File: *July 3, 2023*

# Questions & Next Steps

# Questions?

---

# Next Steps

- Based on our conversation today, we will **build the data structure** to support this submission
- Amanda will be in contact regarding **EOE Security Portal Access**
- Amanda, Renee will be in contact with **final documentation** and **reporting guidance**, *likely around the end of November*
- **Ongoing support** from Amanda, Renee throughout submission process
- **Reflection** on Fall submission for any necessary changes for Spring

# Thank you!

**Amanda Colligan**

*Research Analyst, Education-to-Career Research &  
Data Hub*

**Department of Higher Education**

[acolligan@dhe.mass.edu](mailto:acolligan@dhe.mass.edu)

**Renee Poisson**

*Early College Program Specialist*

**Department of Elementary & Secondary  
Education**

[Renee.poisson@mass.gov](mailto:Renee.poisson@mass.gov)



MASSACHUSETTS  
Department of  
Higher Education